

## Ultra Thin Frame Rigid PV Module

### 200/400W 12V RV SOLAR KITS

Designed to keep you going, TCPOWERTEC RV/Van/Marine Kits are the perfect addition to any RV, motorhome, boat, or mobile application. Equipped with mobile-friendly components, including a flush mount charge controller and a cable entry housing unit, these kits take all the guesswork out of starting your solar adventure. Easy to install and simple to use, they allow you to travel freely and stay off the grid longer without the need for noisy generators.

**2.0mm**

Ultra Thin Glass Thickness

**5.9mm**

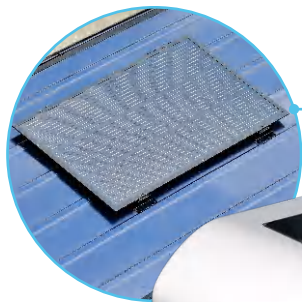
Aluminum Frame Thickness

**40% lighter**

than conventional solar panel

**80% thinner**

than conventional solar panel

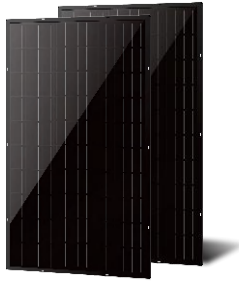


#### Optional Accessories

- Deep cycle battery
- Pure sine wave inverter



## 100W Ultra Thin Frame Rigid PV Module



TCPOWERTEC PV Modules are constructed with top of the line solar cells and materials that comply with the highest industry standards.

- High efficiency
- Water proof connectors
- High transparency tempered glass
- Anodized aluminium frames
- Resistant to harsh weather conditions

## Solar Controller

PWM/MPPT  
10A/20A/30A



- 12/24V automatic voltage identification
- The LCD is designed to dynamically display the operation data and working status of the equipment
- Various load control modes: general mode, light control mode, dual time mode and pure charger mode
- Seal, GEL, Flooded, LifePO<sub>4</sub> and Li(NiCoMn)O<sub>2</sub> battery types are available
- The function of battery temperature compensation

## Accessories



## 200W Mailing Set

- \* 2 x 100W Ultra Thin Frame Rigid Solar Panel
- \* 1 x 10A Charge Controller
- \* 30ft 10AWG Solar Adapter Kit
- \* 16ft 10AWG Tray Cables
- \* 1 x Cable Entry Housing
- \* 2 Sets x Mounting Z Brackets

## 400W Mailing Set

- \* 4 x 100W Ultra Thin Frame Rigid Solar Panel
- \* 1 x 30A Charge Controller
- \* 30ft 10AWG Solar Adapter Kit
- \* 16ft 10AWG Tray Cables
- \* 1 x Cable Entry Housing
- \* 4 Sets x Mounting Z Brackets
- \* 3 Pairs x Y Branch Connectors

